

≡ INTERREG-Projects in Wismar

Key topics:

- cruise tourism (JOHANN, JOHANNA)
- tourism in a world heritage site (DUNC)
- Museum education (CROSSROADS)

≡ JOHANN

Joint project of developing the tourism for smaller cruise ships in the Southern part of the Baltic Sea Region



- Development of harbour infrastructures
- Development of touristic products
- SWOT, strategies and training

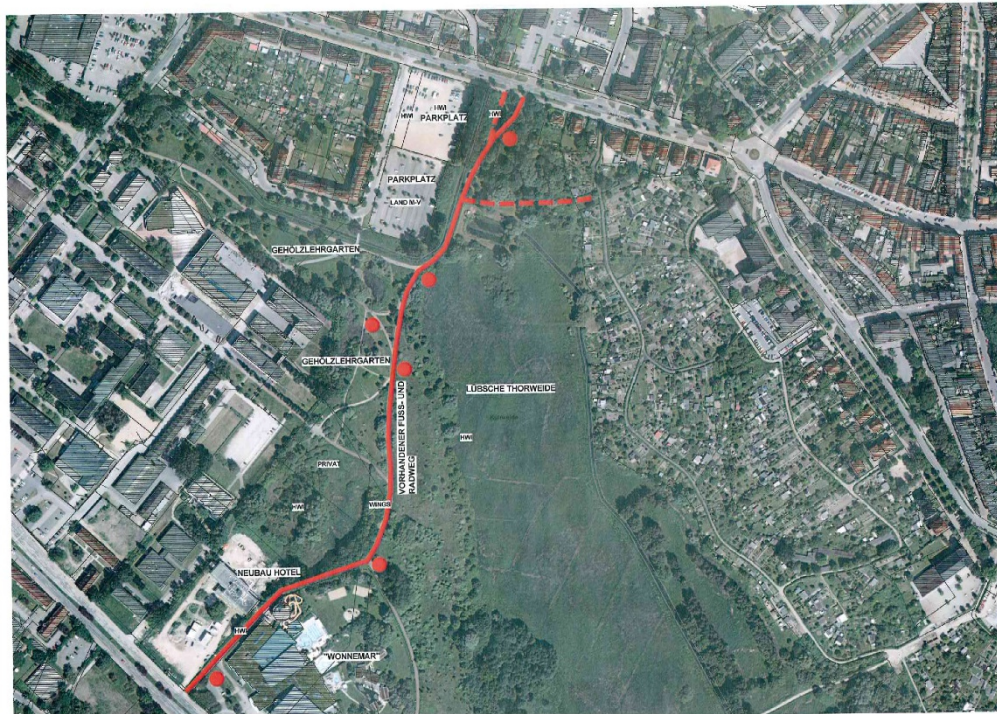
≡ JOHANNA

Qualification programmes and special trainings in two fields:



- Trainings for tourist guides in collaboration with the Association of tourist guides
- Training for cruise tour coordinators in collaboration with WINGS

Development of UNESCO nature and culture related heritages



- World heritage trail between the water parc Wonnemar and the periphery of Wismar's Old Town
- Touristic guidebook for kids

≡ CROSSROADS

Network and cooperation of cultural institutions in the Southern part of the Baltic Sea Region



- Implementation of a museum concept based on a role play taking the participants on a time travel
- Dealing with current topics